



## *Bennington County Regional Commission*

Present: Janet Hurley, Nick Zaiac, Jim Brown, Cinda Morse, Tom Dee, Jon Hale, Dixie Zens, Steven Bendix, Brian Lent, Sheila Kearns, Anthony MacLaurin, Bill Laberge, Steven Berry, Stephanie Lane, Jane Davies, Megan Herrington, Linda Gallagher, John LaVecchia, Charles Rockwell, Bruce Lierman, Dana Rozycki, Nancy Faesy, Debra Fuller, Kevin Bisaccio, Dimitri Garder, Jason Dolmetsch, Jay Reichman, Kyle Philipp, Tordis Isselhardt, Paul W. Carroccio, John LaVecchia, Jr., Mike B

Staff: Jim Sullivan, Bill Colvin, Jonathan Cooper, Cat Bryars, Callie Fishburn, Allison Stohl, Mark Anders, Jim Henderson

### I. Welcome and Introductions

Janet Hurley, BCRC Chair, welcomed BCRC and BCIC commissioners and board members, staff, municipal officials, and other interested participant and called the meeting to order at 5:32 PM.

### II. BCRC Annual Business Meeting

BCRC Director Jim Sullivan provided a brief overview of the past year, noting the numerous projects that have been completed despite the disruptions caused by the pandemic. He thanked commissioners, municipal officials, and BCRC staff for their work and perseverance. Sullivan also discussed the year ahead and the interesting opportunities for the Commission, and especially for towns and villages, presented by the coming American Rescue Plan funds.

An engraved *Simon Pierce* bowl was presented to Suzanne dePeyster, long-serving BCRC commissioner from Sandgate and a member of the executive committee for many years. Her dedication to the organization has allowed it to be more effective and to make lasting contributions to all of the communities in our region. Thank you, Suzy!

The Town of Rupert and its many citizen volunteers were recognized for their remarkable efforts to transform and revitalize the Village of Rupert – the community was awarded the Vermont Planners' Association Project of the Year for their work to revitalize buildings, develop infrastructure, create community activities and relationships, and plot a course for the future of this historic village center.

Jim Henderson apprised commissioners of the availability of Tactical Basin Plans for major watersheds in the region; he can be contacted at the BCRC for more information on how to access and comment on the plans.

III. Approval of Minutes of the March Meeting of the BCRC

Motion to approve as presented by Cinda Morse. Second by Nancy Faesy. Passed unanimously.

IV. Elections and Bylaw Amendment

Elected to the following positions with 21 votes approving (13 required) and none opposed:

- Chair: Janet Hurley
- Vice-Chair: Dan Monks
- Secretary: John LaVecchia
- Treasurer: Cinda Morse
- Interest Group Representatives:
  - Conservation: Katy Crumley
  - Energy: Wayn Goodman
  - Transportation: Bruce Lierman
  - Public Health: Megan Herrington
  - Housing: Stephanie Lane

The Bylaw amendment extending the term of office for executive committee members from one year to three years was approved with 21 votes in favor, none opposed.

V. BCIC Annual Business Meeting

BCRC Assistant Director, Bill Colvin, and Community and Economic Development Specialist, Jonathan Cooper, gave a presentation on the Commission's community and economic development work over the past year (presentation attached).

The Minutes of the 2020 Annual Meeting of the BCIC were unanimously approved as presented, upon motion by Jim Brown and second by Kevin Bisaccio.

The following individuals were elected to the BCIC Board, upon a unanimous vote following a motion by Tom Dee and second by Jim Brown.

- Doug Ball, Kevin Bisaccio, Jim Brown, Paul Carroccio, Kevin Dailey, Dimitri Garder, Brian McKenna, Brian Murphy, Dixie Zens.

VI. Regional Food Systems

BCRC VISTA, Callie Fishburn, presented information on the regional food system asset map she developed working with Bennington College's CAPA program (presentation attached). The asset map can be found on the BCRC website at: <http://www.brcvvt.org/bennington-county-food-system-asset-map.html>.

Kyle Philipp, representing the Regenerative Food Network, presented information on regenerative agriculture, the local movement to transform the food system and expand opportunities in this critical sector, and examples of their recent work including the Southshire Meats and Bennington Food Center project (presentation attached).

VII. There being no further business, the meeting was adjourned at 6:40 PM.

# 63RD ANNUAL STOCKHOLDERS MEETING (A VIRTUAL EVENT)

---

BENNINGTON COUNTY INDUSTRIAL CORPORATION

MAY 20, 2021



# AGENDA

---

1. **Welcome** – Bill Colvin
2. **Acceptance of 2020 Annual Meeting Minutes** – Dixie Zens
3. **Year in Review** – Bill Colvin, Jonathan Cooper
4. **Nomination of Board Members for 2021** – Bill Colvin



# YEAR IN REVIEW

---

- Putnam Block Redevelopment
- Pandemic Response
- Other Business Support/Grants
- Regional Economic Development
- Broadband/CUD





# PUTNAM BLOCK REDEVELOPMENT

## Putnam Block Redevelopment



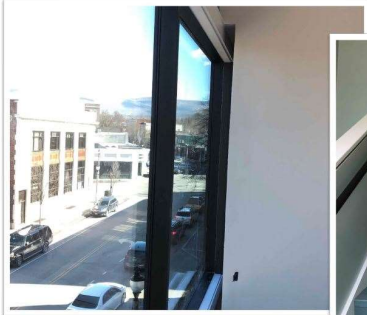
Empowering Community Revitalization

### M&S Putnam Block Redevelopment Project Phase I Construction Update

Disbursement #17 March 31:  
100% complete

Total Construction Contract Cost:  
\$19,833,531

Remaining Owner's Contingency: \$127,432



# PANDEMIC RESPONSE

---

- Over 400 business contacts since March 2020 related to Covid impacts, guidance, recovery
  - Compliance w/Orders, UI, Financial Assistance (PPP, EIDL, USDA-RD, etc.)
- Direct Administration of Support Programming
  - Economic Recovery Grants
  - Restart VT Technical Assistance
- -Information Sharing & Distribution
  - Dedicated Website
  - Webinars, Social Media, Community Programming
- Recovery Planning
  - VCRD, FEMA, RDCs of VT-VT Legislature





# PAYCHECK PROTECTION PROGRAM

---

## BELOW \$150,000

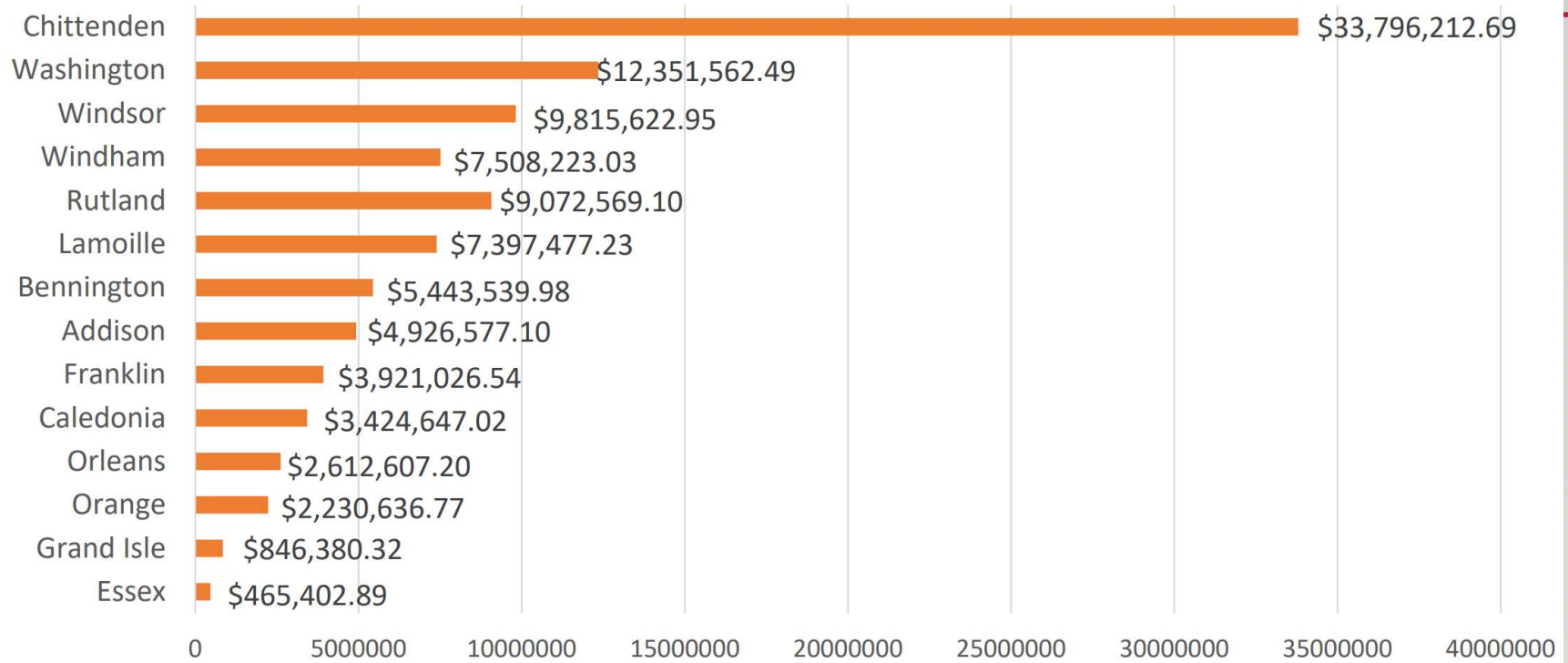
- 610 Recipients
- \$22.3 million
  - Manchester: \$9.4 million
  - Bennington: \$8 million
  - Arlington: \$1 million
  - Dorset: \$1 million
  - Only Landgrove and Glastenbury inactive.

## ABOVE \$150,000

- 69 Recipients
- \$20 million - \$60 million
  - Principally in Bennington

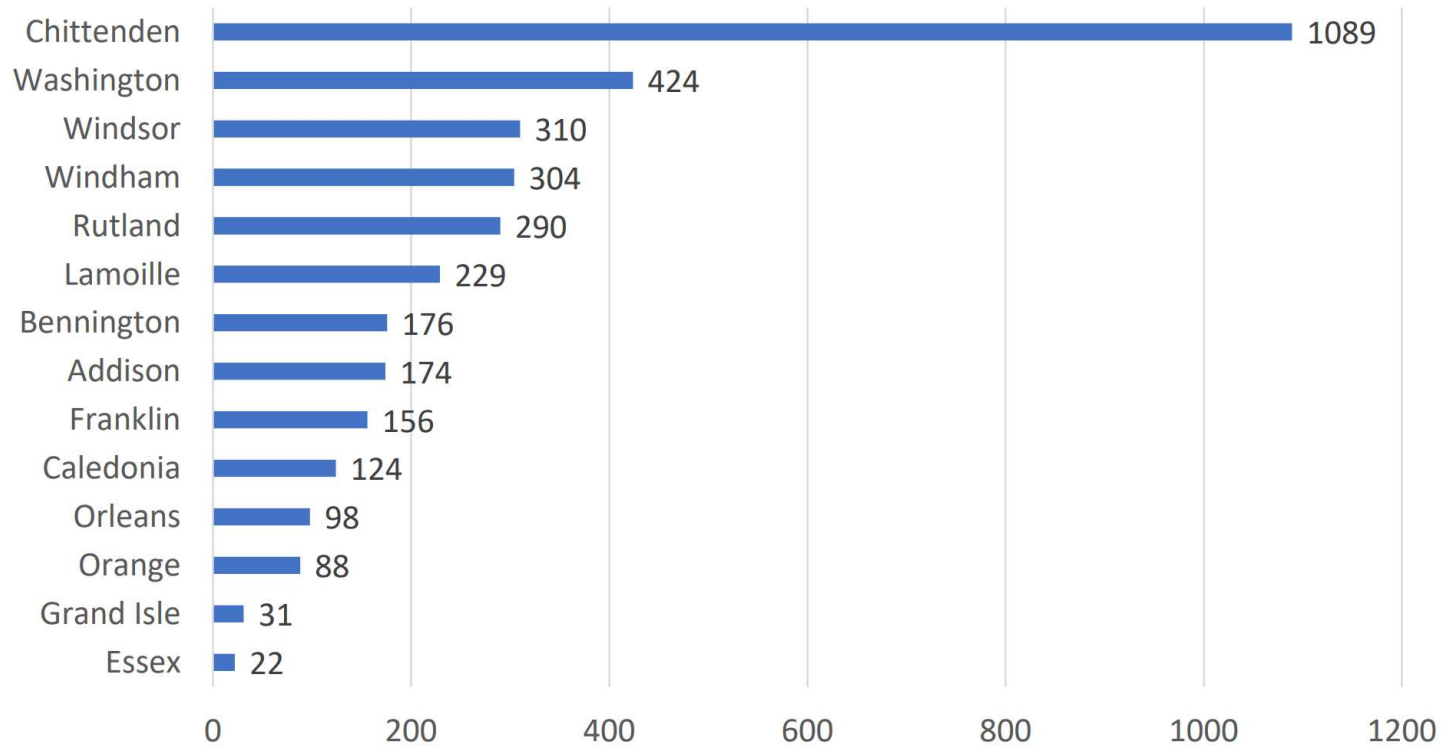
# ECONOMIC RECOVERY GRANTS: ROUND I

ACCD & Tax: Grant Award \$ Distribution by County



# ECONOMIC RECOVERY GRANTS: ROUND I

ACCD & Tax: Sum of Grants Awarded



## SOME RESPONSE FIGURES: CDBG & REVTA

- Smaller grants, from \$500 to \$10,000
- CDBG: Nine awards/\$80,000 for sole proprietors (lottery-based)
  - 2 Bennington, 1 Shaftsbury
  - 5 Manchester, 1 Dorset
- ReVTA: 23 awards/\$57,834 for all business types (scope-based)
  - 19 businesses, three multi-scope
  - \$29,230 to 9 local vendors
  - \$18,384 to 6 other Vermont vendors
  - \$10,220 to 4 out-of-state vendors

# CDBG & REVTA: DISTRIBUTION

---

## AWARDS BY TOWN

- Manchester: 13
- Bennington: 12
- Arlington: 2
- Rupert: 2
- Dorset: 1
- Shaftsbury: 1

## DOLLARS BY TOWN

- Manchester: \$60,460
- Bennington: \$45,624
- Dorset: \$10,000
- Shaftsbury: \$10,000
- Rupert: \$6,000
- Arlington: \$5,750

## Industry Sectors

- ▶ Arts: 9
- ▶ Retail: 5
- ▶ Professional Services: 4
- ▶ Hospitality: 3
- ▶ Human Services: 3
- ▶ Food Services: 2
- ▶ Manufacturing and Construction: 2
- ▶ Real Estate Lessors: 1
- ▶ Outdoor Recreation: 1
- ▶ Livestock: 1

# BUILDING COMMUNITIES GRANTS

				Requesting		Cost	Approval
3	Bennington	Bennington County Regional Commission (BCRC)	Farm Road Brewing, LLC	\$25,000.00	Exterior/interior renovations and plumbing/electrical upgrades for a small brewery and taproom	\$88,850.00	\$10,000.00
4	Bennington	Bennington County Regional Commission (BCRC)	Brushmill Cider Company, LLC	\$25,000.00	Acquisition of a commercial grade cider making equipment	\$60,000.00	\$10,000.00

- \$69,704 of the \$601,847 total for all grants came to organizations in our service area
  - ALL recipients in Bennington/North Bennington





# REGIONAL ECONOMIC DEVELOPMENT

- Southern Vermont CEDS
- SoVT Recruitment & Marketing Program
- SoVT Welcome Wagon
- Southern Vermont Economy Summit
- Vermont Stay-to-Stay




**Southern Vermont Economy Summit: Reconnect**  
 May 12-14, 2021

**Summit Schedule**

	May 12	May 13	May 14
9-11 AM	<p><u>The Future of Federal Rural Policy</u></p> <p><i>Keynote Speaker: Tony Pipa, Brookings Institution, Senior Fellow - Global Economy and Development, Center for Sustainable Development</i></p>	<p><u>Reframing Growth, Vetting our Values</u></p> <p>Facilitated by Ted Brady of VICT, highlighting what a healthy economy looks like while keeping to our Vermont values.</p>	<p><u>Small Scale Changes to Strengthen our Communities</u></p> <p>Facilitated by Donny Litchfield, Brattleboro Museum &amp; Arts Center highlighting planning, arts and culture, diversity, and social capital.</p>
New to Vermont Lunch Series			
12-1 PM	<p><u>COVID Newcomers: Here to Stay?</u></p>	<p><u>New American to New Vermonter</u></p>	<p><u>How New People Generate New Opportunities for Our Communities</u></p>
2-4 PM	<p><u>In Conversation With Governor Scott and Lt. Governor Gray &amp; "The Future Talks Back" Young Professional Town Hall</u></p>	<p><u>Applying an Equity Lens to Vermont: Structural Solutions for Structural Problems</u></p> <p><i>Yusana Davis, Executive Director of Racial Equity, State of Vermont</i></p>	<p><u>Community as Corporation: Talent Retention in Low Status America</u></p> <p><i>Keynote Speaker: Mariana Carter, Social/Entreprise Pioneer, Mariana Carter Group</i></p>



# BROADBAND/CUD



- 
- ▶ Southern Vermont Communications Union District/Catamount Fiber
    - ▶ Created March 2020 by town votes, service area now covering 14 towns
  - ▶ \$185,000 in state grants
    - ❑ \$60,000 grant for completion of feasibility study and business plan.
    - ❑ \$100,000 grant for pole survey in most-underserved towns.
    - ❑ \$25,000 for deployment of WiFi hotspots around the region for telehealth, remote learning, and remote work access, and lendable equipment for at-home connectivity.
  - ▶ \$15,000 in federal grant + municipal support for staff assistance
  - ▶ \$10,000 philanthropic contribution for general expenses

# PROPOSED BOARD OF DIRECTORS

---

- **Doug Ball** TD Bank
- **Kevin Bisaccio** Lee Bank
- **Jim Brown** The Bank of Bennington
- **Paul W. Carroccio** TPW Real Estate
- **Kevin Dailey** Southwestern VT Healthcare
- **Dimitri Garder** Global-Z International
- **Brian McKenna** D.B. McKenna & Co.
- **Brian Murphy** Bennington College
- **Dixie Zens** Abacus Automation

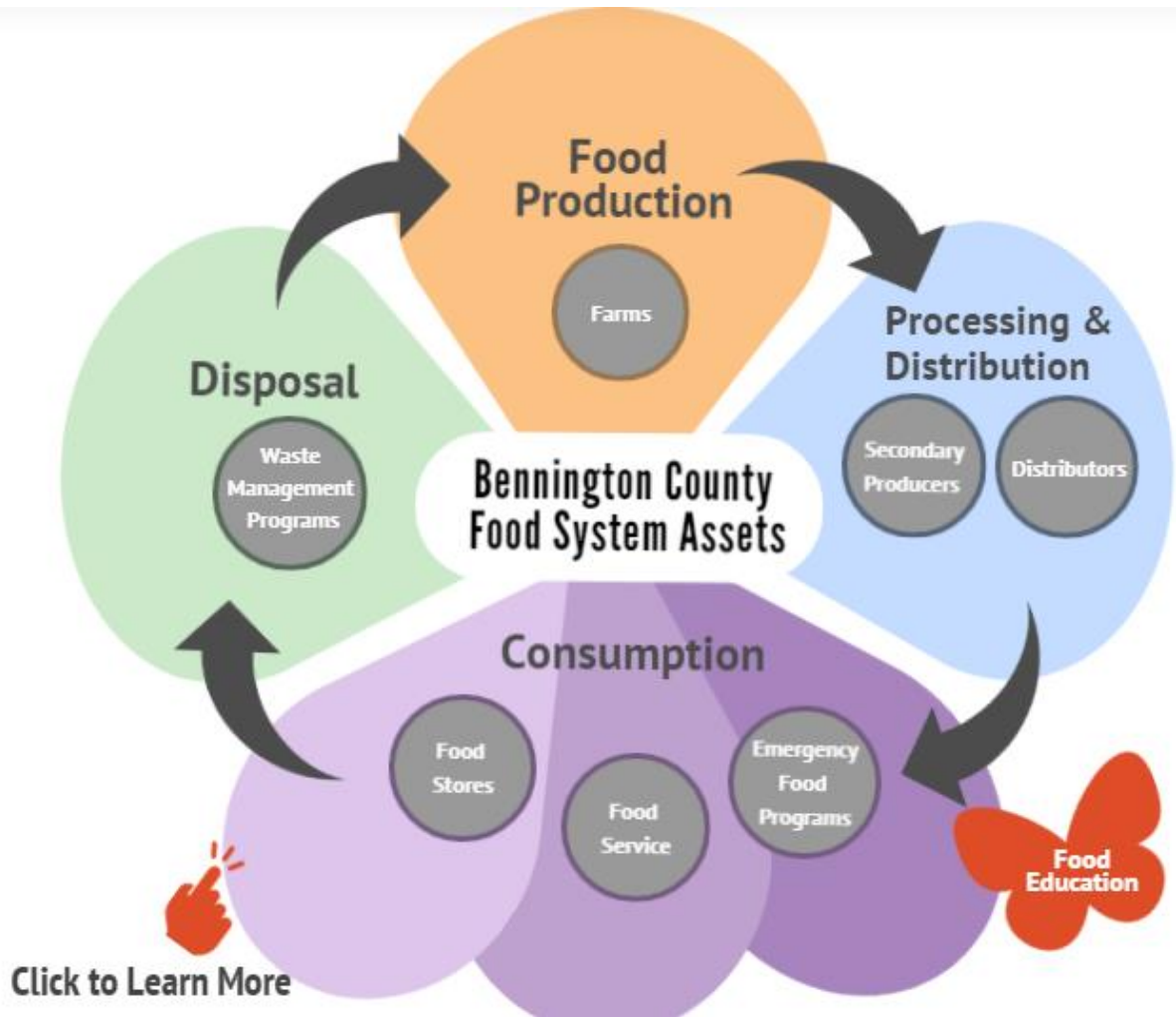
# The Bennington County Food System Asset Map

Callie Fishburn, AmeriCorps VISTA, Bennington County Regional  
Commission



# About This Project

- Developed by CAPA in partnership with consultants from Big Sky Education and the BCRC VISTA.
- Funded by the Mellon Grant
- Bennington College students in the Understanding Food Insecurity in Bennington course conducted initial interviews and collected data.
- Data was collected and validated by myself and the consultants.
- Main data sources: VT Farm to Plate Atlas, USDA, VT Agency of Agriculture, and Feeding America.



Click to Learn More



# Farms of Bennington County

Search

Name	Website	Contact	Products*	Retail**
Armstrong Farm	<a href="#">Armstrong Farm - Facebook</a>	(518) 590-1374	Maple, Pumpkins	Farmstand
Clear Brook Farm	<a href="#">Clearbrookfarm.com</a>	(802) 442-4273	Berries, Veggies	Farmstand; CSA
Dutton Berry Farm	<a href="#">Duttonberryfarm.com</a>	(802) 362-3083	Apples, Berries, Dairy, Maple, Veggies	Farmstand; U-Pick
Earth Sky Time Community Farm	<a href="#">Earthskytime.com</a>	(802) 384-1400	Veggies	Farm Store
Equinox Valley Nursery	<a href="#">Equinoxvalleynursery.com</a>	(802) 362-2610	Saplings, Veggies	Farm Store
Fahey Family Honey Farm	<a href="#">Faheyfamilyhoneyfarm.com</a>	(802) 832-5837	Honey	Online Store
Glastenview Maple Farm	<a href="#">Glastenview Maple Farm - Facebook</a>	(802) 442-4687	Maple	Farm Store
Hill Top Farm	<a href="#">Hilltopfarm1209.weebly.com</a>	(802) 379-5414	Beef, Berries, Dairy, Hay/Feed, Lamb, Maple, Pork	Farm Store
However Wild Honey	<a href="#">Howeverwildhoney.com</a>	(802) 733-4761	Honey	Online Store
Joon Moon Farm	<a href="#">Joon Moon Farm - Facebook</a>	hglaski@comcast.net	Dairy, Eggs, Honey, Rabbit, Turkey, Veggies	
Mad Tom Orchard	<a href="#">Madtomorchard.com</a>	(802) 366-8107	Apples	U-Pick
Mighty Food Farm	<a href="#">Mightyfoodfarm.com</a>	(802) 823-0102	Berries, Melon, Veggies	CSA

\*Search by farm products (Ex. Veggies, Maple, Beef, etc)

\*\*Search by farm retail type (Ex. CSA, U-Pick, Farmstand, etc)

For more information about the farms in the county [click here](#).

## Additional resources and links



If you are interested in volunteering, fill out [this form](#).  
If your organization is seeking volunteers, fill out [this form](#).



If you are in need of food assistance, [this calendar](#) contains up-to-date times and locations of local food programs.  
See [this list](#) for additional Covid-19 resources, or call [211](#) for more resources.



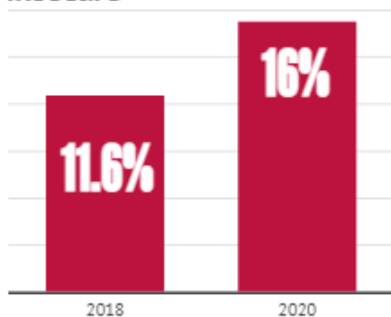
This infographic is part of the [Bennington County Food System Asset Map](#).  
For more information about the food system of Vermont, see the VT Farm to Plate Atlas [here](#).



Are we missing something? Please let us know by filling out [this form](#).  
If you have suggestions or would like access to the full database, email us [here](#).

## Food Insecurity in Bennington County

In 2020, food insecurity in the county increased by 37%. 16% of the county is now food insecure



1 in 4 children in Bennington County are currently food insecure.



Child food insecurity has increased by **over 50%** since 2018

Bennington County has dozens of emergency food programs including:

- Food Pantries
- Prepared Food Programs
- Senior-Serving Programs
- Religious-Affiliated Programs

**A snapshot of Bennington County emergency food programs**

Local programs are struggling to meet

## Food Service in Bennington County

Bennington County has dozens of food services businesses.

- These include restaurants, cafes, cafeterias, bars, coffee shops, and catering companies.
- Many are independently owned, while others are regional or national franchises.

Many food service businesses operate on small margins and employees often earn a majority of their income through tips.



In 2019, food service employees made up 12.7% of VT's non-government workforce.

In VT, this sector relies on tourism.



**13,000,000**  
# of out-of-state visitors in 2019.



**\$2.8 billion**  
Amount spent by visitors in 2019.

**A snapshot of food service in Bennington County**

Restaurants have been especially hard hit by the Covid-19 pandemic.



In July 2020, about **10,000 Vermont restaurant employees** were out of work.



Restaurant employment **dropped 40%** between

Owners are struggling to keep the doors open in the midst of new restrictions.

"We've been left in the dark."

"Government is not giving us a break!"

# Thank you!

[cfishburn@bcrcvt.org](mailto:cfishburn@bcrcvt.org)  
[benningtonassetmap@gmail.com](mailto:benningtonassetmap@gmail.com)

[Bennington County Food System Asset Map - BCRC \(bcrcvt.org\)](#)





# REGENERATIVE food network

Restoring a resilient, equitable, and bountiful food system

# The Problem



# The case for food system transformation

The world has been focused on driving productivity to meet the increasing food security needs of a growing world population, but...



...environmental stress is increasing globally...



...the security of future supply is in question...



...and the food produced is contributing to a global health crisis.

# Why? Because the current system is Extractive

Today's extractive economies are "unsustainable" precisely because they incentivize gigantism, hyper concentration, and endless, overheated growth.



# The Solution



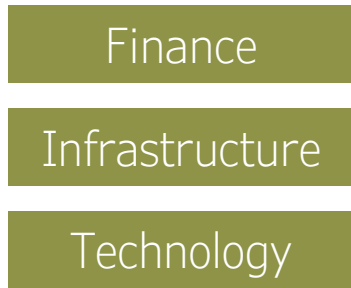
# Make the system Regenerative

A system to promote, facilitate and accelerate the **global** transition to **regenerative** food, farming and land management for the **purpose** of restoring climate stability, ending world hunger and rebuilding deteriorated social, ecological and economic systems.

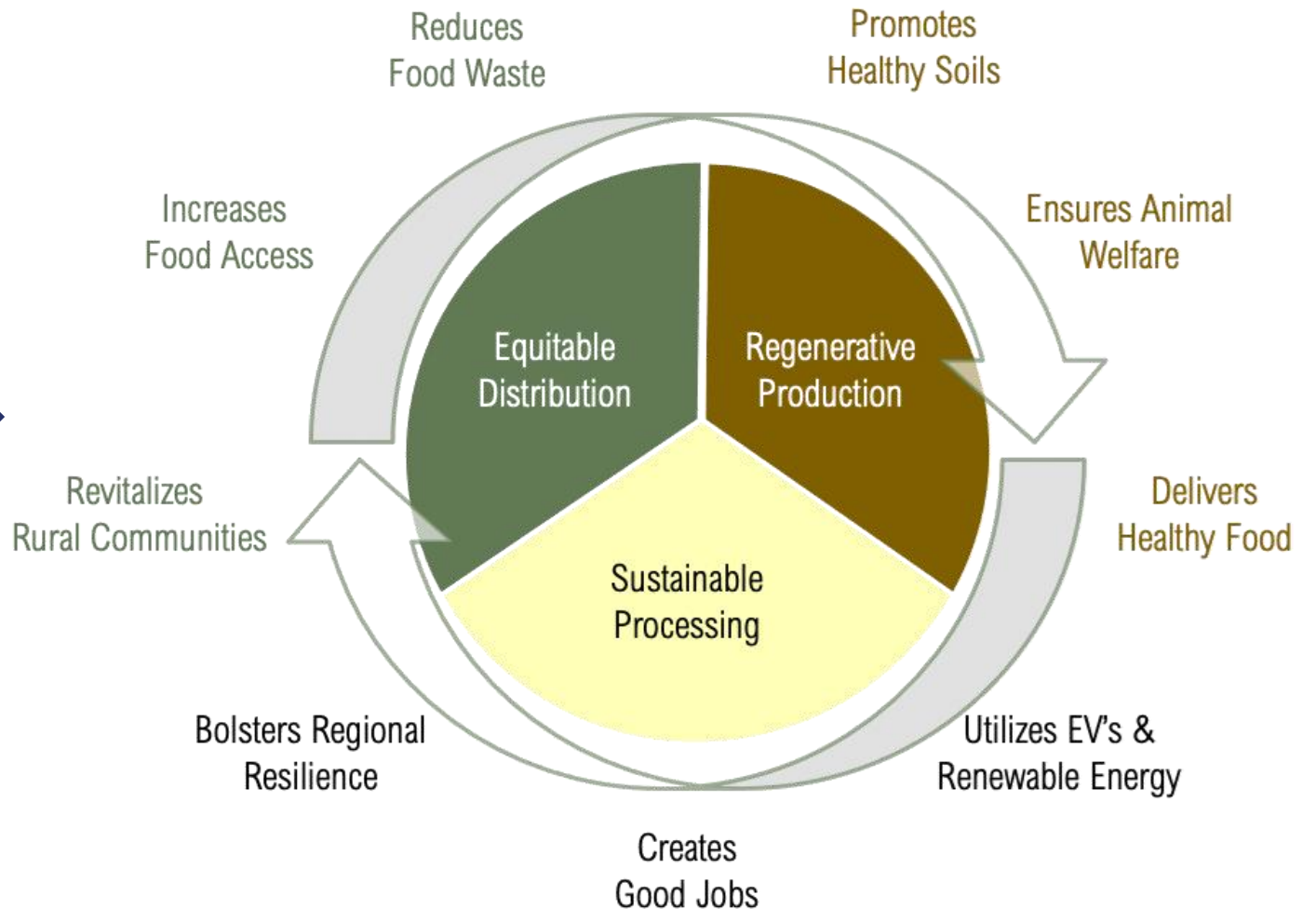
(Regeneration International, [www.regerationinternational.org](http://www.regerationinternational.org))

# Regenerative Food Network is a Catalyst for the Good Food System

RFN partners with farmers, food producers, food systems workers, and communities to enhance local initiatives and provide the Finance, Infrastructure, and Technology they need to thrive.



Farmers and  
Food Producers



# Southshire Meats





Southshire Meats is a vertically integrated regenerative meat company specifically formed to help farmers make the transition towards regenerative practices and capitalize on the market opportunity for “Good Meat”.



- Starting with Studio Hill Farm (A Savory Influencer Hub) grow a network of certified regenerative sheep and poultry farmers.
- Build and aggregate a network of distributed small and medium scale infrastructure projects to more directly connect our regional farmers and eaters.
- Utilize the Regenerative Impact Exchange technology to enhance the marketing and logistics for Good Meat and increase profits for farmers.

Collaborators



# OUR FARMER NETWORK

## Context & Relationships



## LIVESTOCK

For millions of years the rolling hills in our region were grazed by roaming herds and flocks of herbivores. Over that time the hill plant and animal communities evolved to thrive under natural grazing patterns.

Therefore, we have partnered with holistic managers that have returned livestock to the hills and are returning health, abundance, and natural order to their hillside farms.



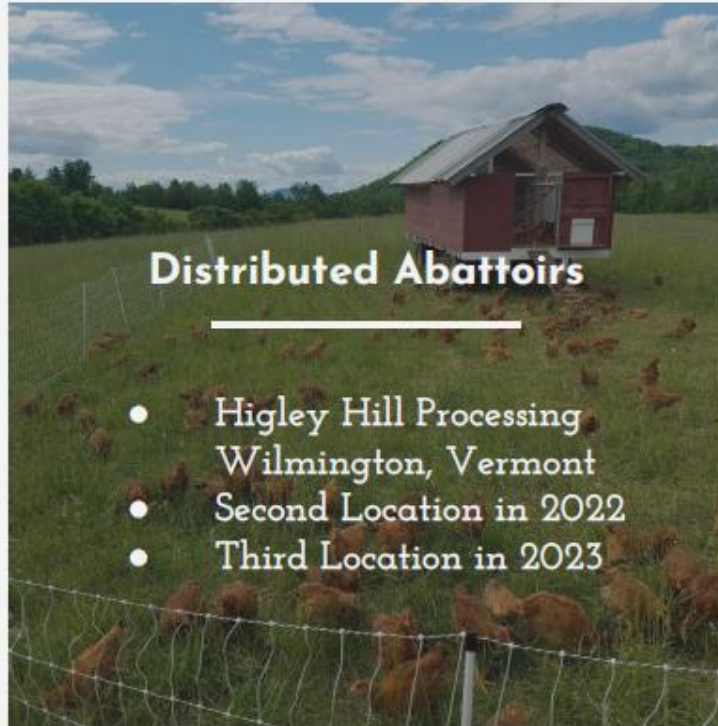
## GRAINS

For millions of years the flat wide-open expanses in our region produced a rich and symbiotic polyculture of grasses, forbs, legumes, and grains. This diverse polyculture fed—and thrived under—roaming packs of both herbivores and omnivores.

Therefore, we have partnered with holistic managers who understand the importance of crop diversification, rotation, and the role animals play in keeping the land healthy.

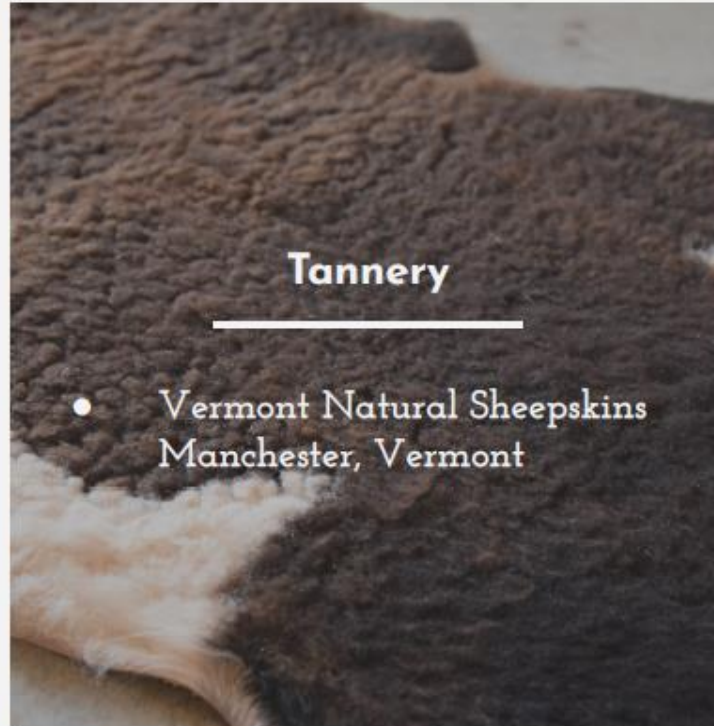


# OUR REGIONAL PROCESSING INFRASTRUCTURE



**Distributed Abattoirs**

- Higley Hill Processing  
Wilmington, Vermont
- Second Location in 2022
- Third Location in 2023



**Tannery**

- Vermont Natural Sheepskins  
Manchester, Vermont



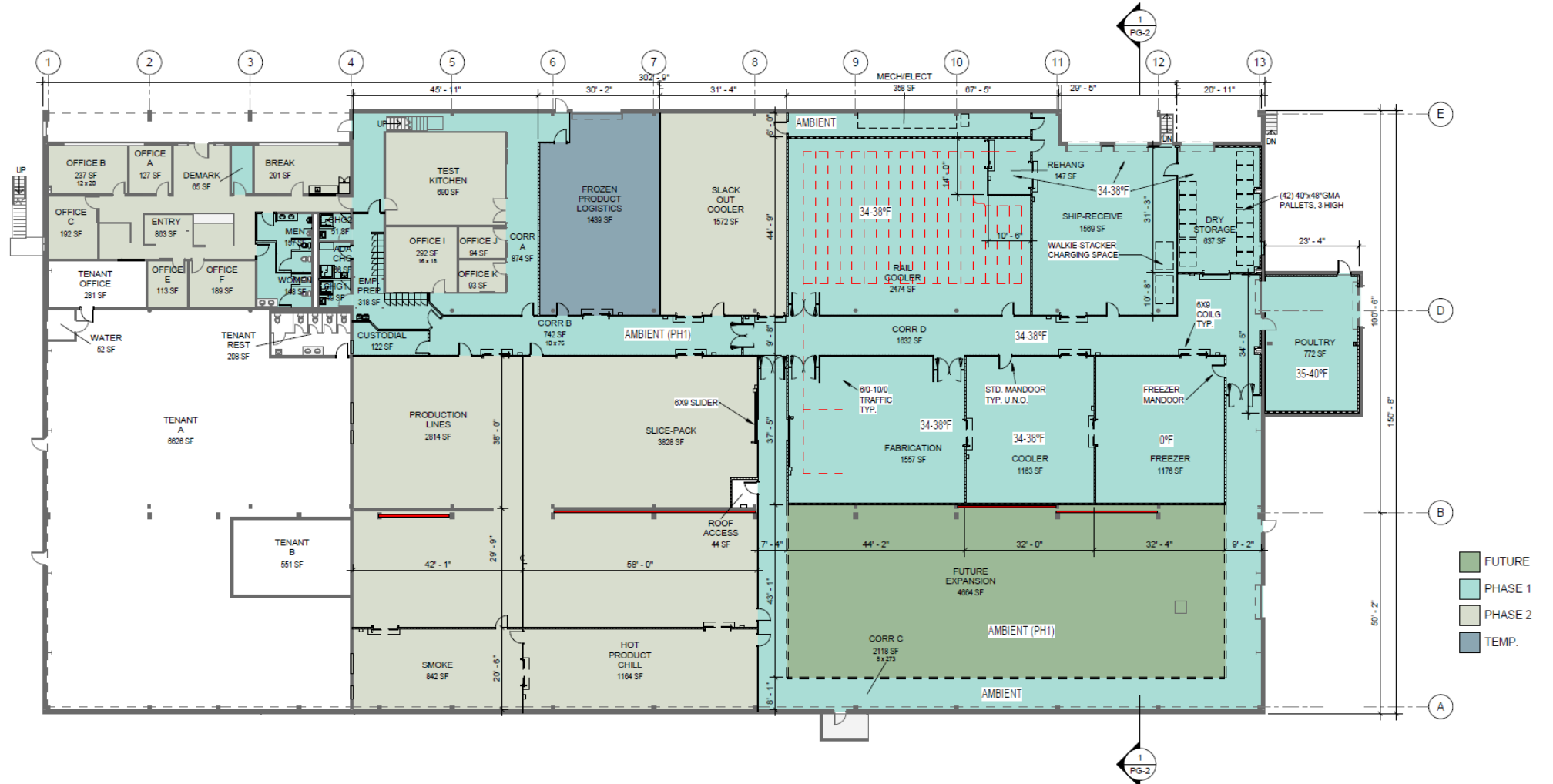
**Centralized Processing**

- Shields Drive Processing  
Bennington, Vermont



# Bennington Food Center at Shields Dr.

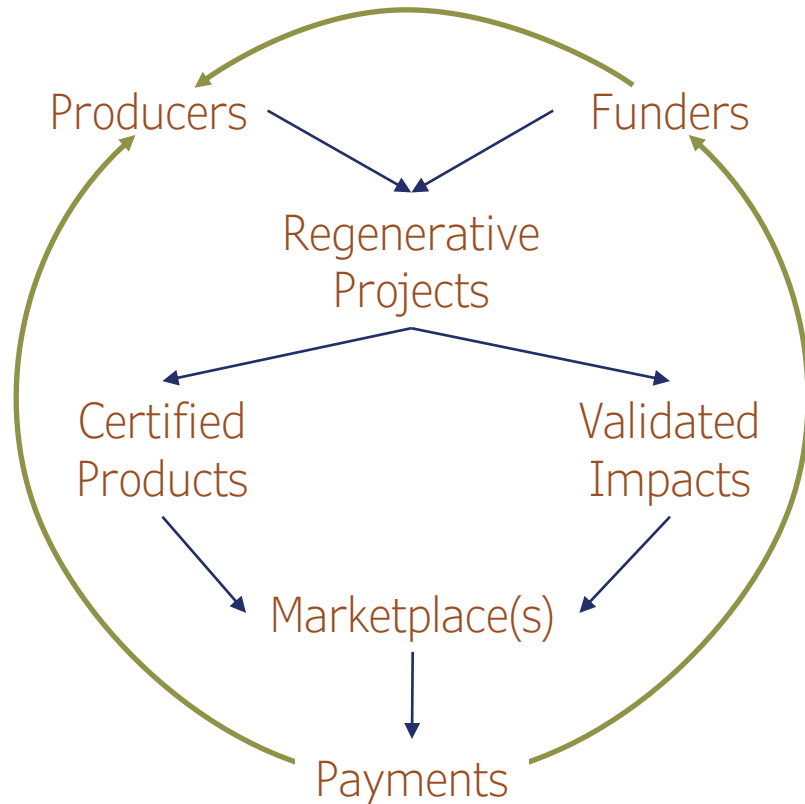
The Bennington Food Center is a 40,000ft<sup>2</sup> facility that will serve as an aggregation & distribution, meat finishing, and co-packing facility.





## Regenerative Impact Exchange (RIX)

An exchange is the crossroads of investment capital & opportunity. At RIX, capital is put to work funding projects that transparently generate validated economic, environmental, & social impacts.



- Total Supply Chain Transparency from Soil-to-Sale attracts outside capital, encourages liquidity, & protects investors
- Mobilizes participation in real-world agricultural projects that generate certified products & validated impacts
- Acts as a more accurate barometer of climate, economic, & social justice efforts than current purely-monetary indicators like GDP

Collaborators

HUDSON  
CARBON

4PFOODS



real  
Organic  
project

r3.c.rda

Savory Institute



# Southshire Meats Team

Our team has the cross disciplinary expertise to deliver real impact to our communities in the race toward a sustainable food system future.



**Jesse McDougall**  
CEO

Jesse and his wife, Caroline, are the 4th-generation of their family to farm on Studio Hill. Jesse is an author of seven books, a frequent public speaker, an accredited holistic management professional, and the principal author of the world's first bill advocating for regenerative agriculture—which was considered at length by the Vermont Senate, and sparked many follow-up bills around the country.



**Meri Mullins**  
FARMER PROGRAMS

Meri Lillia Mullins is the founder of Growing Resilience and the manager of Lighthearted Ranch in Longmont Colorado. She works to increase resilience in our food system through supporting soil health practices and the next generation of farmers. Her continued work to bridge divides through food and agriculture has helped foster productive relationships in the agriculture community and beyond



**Brian Leach**  
GRAINS OPERATIONS

Brian owns and operates Haystack Farmstead in Pawlet VT raising and finishing grass fed Angus-Wagyu crosses. He has a bachelor of science in mechanical engineering from the University of Vermont and a background in alternative energy systems design. He grew up and worked on his family's commercial dairy and has spent the last decade pursuing alternative models for farm viability in Southwestern Vermont.



**Hogan Sennett**  
OPERATIONS MANAGER

Hogan has a bachelor degree in sustainability science from the University of Vermont and a background in renewable energy project design and logistical management. A native of Vermont, Hogan grew up working various seasonal agricultural jobs in the region and developed a passion for the outdoors through fishing and hunting. He currently raises and finishes grass fed lamb on his farm along with pasture raised poultry.



**Dan Reilly**  
LOGISTICS

Dan Reilly, founder and CEO of Equinox Food Brokers, has years of experience and an exceptional track record for building, growing and generating sales in the specialty food market. His knowledge of distribution and his focus on high quality, locally produced products, along with his solid relationships with food distributors makes him ideally positioned to help businesses grow.



**Chelsea Bush**  
OFFICE MANAGER

Chelsea Bush, co-operator of Southstream Farm in Pownal, VT, has a Bachelor of Science in Political Science, and she is nearing completion of her Masters in Education. She grew up on her family's homestead raising livestock and produce, and is currently assisting in the development of Southshire Meats.



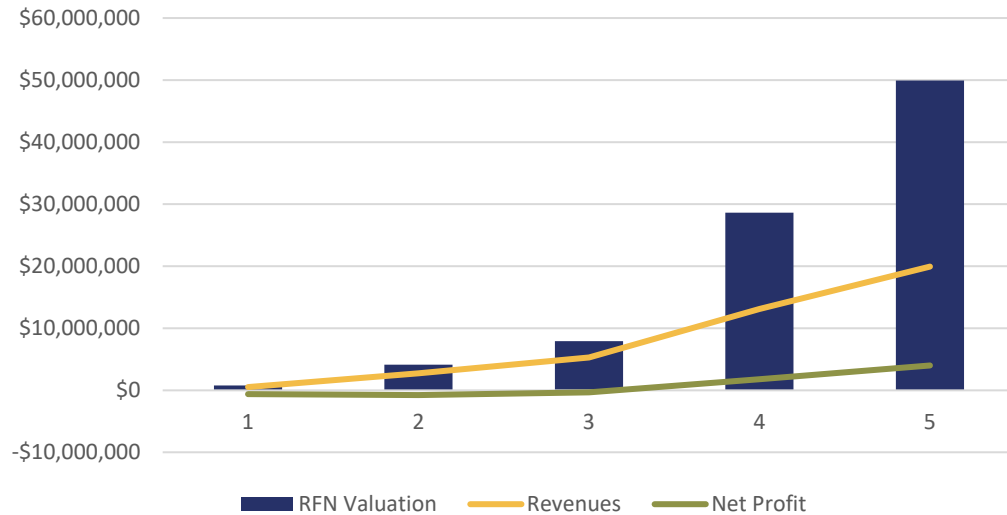


# Financial Metrics

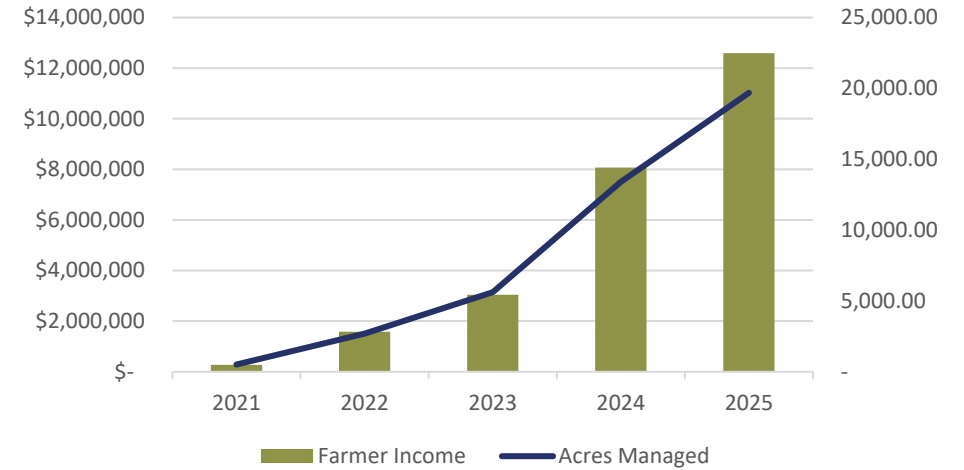
Southshire Meats creates significant social, ecological, and economic value for Investors, Farmers, and Communities.

- \$10M Invested in Southshire and associated Infrastructure generates
  - \$20M Revenues in 2025,
  - \$2.5M in wages, \$12M in Farmer Income, and
  - \$50M in Value for Shareholders. (\$29M for RFN's 58% stake)

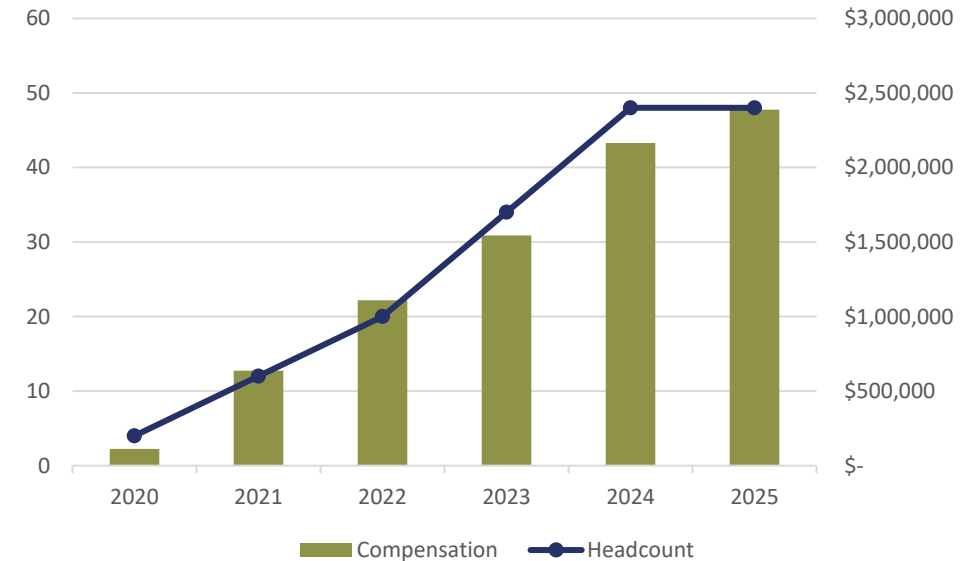
Southshire Value



Farmer Income & Acres Regenerated



Total Compensation vs. Headcount





# REGENERATIVE food network

For more information please contact:  
Kyle Philipp, CEO – [kyle@regenfood.net](mailto:kyle@regenfood.net)